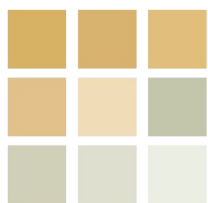




pearson
ferrier®



16 SYCAMORE DRIVE
Bury, BL9 6TQ
£260,000

16 SYCAMORE DRIVE

Property at a glance

- FREEHOLD MODERN END TOWNHOUSE
- WELL REGARDED POSITION AT HEAD OF CUL-DE-SAC
- OFFERED FOR SALE WITH NO ONWARD CHAIN
- THREE BEDROOMS (TWO WITH BUILT IN STORAGE)
- COMBINATION GAS CENTRAL HEATING
- UPVC DOUBLE GLAZING
- MATURED GARDENS FRONT AND REAR
- DRIVEWAY

A modern and very well cared for FREEHOLD end townhouse in a highly desirable cul-de-sac location within a select residential estate just north of Bury town centre. The property is being offered for sale with no onward chain and benefits from combination gas central heating fired by a Vaillant boiler and upvc double glazing throughout.

With all the attributes of a semi detached home, briefly the accommodation comprises: entrance hall, lounge with laminate flooring, fitted dining kitchen with built in cooking suite, first floor landing, three bedrooms and three piece bathroom with thermostatic shower.

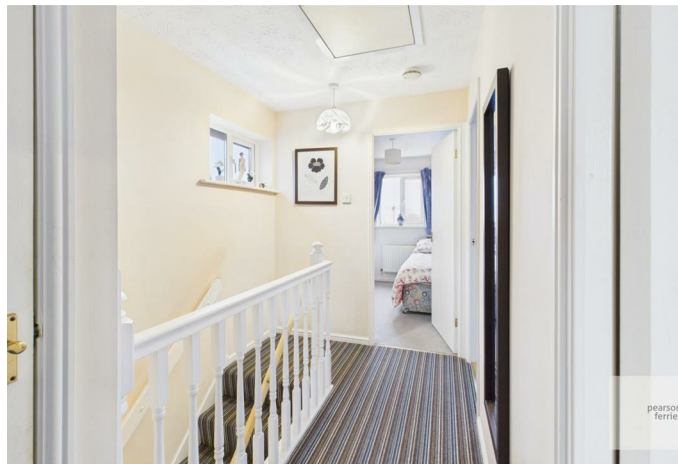
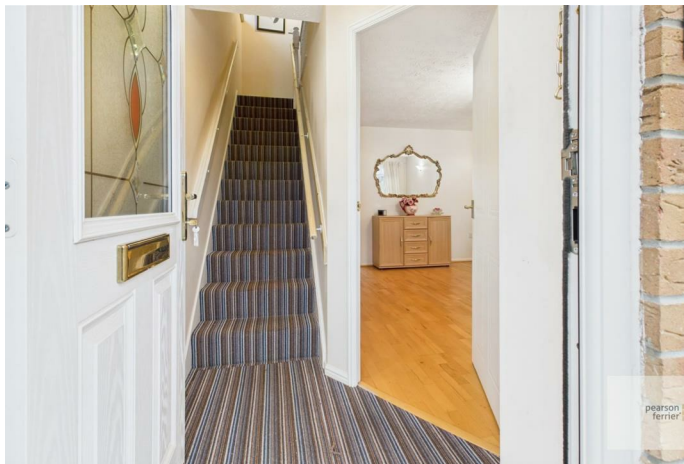
To the outside there are matured gardens to the front and rear with a side driveway providing off road parking.

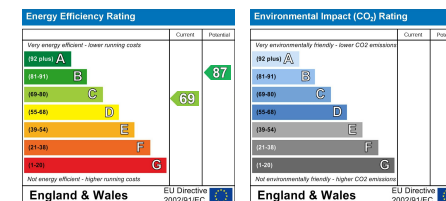
Tenure - Freehold

EPC Rating - C

Council Tax Banding - C







Bury Office
435/7 Walmersley Road, Bury, Lancashire, BL9 5EU
Telephone: 0161 764 4440
Fax: #
Email: bury@pearsonferrier.co.uk

www.pearsonferrier.co.uk



All statements contained in these particulars are for indicative purposes only and are made without responsibility on the part of Pearson Ferrier and the vendors of this property and are not to be relied on as statements or representations of fact. Potential purchasers should satisfy themselves by inspection or otherwise as to the accuracy of such details contained in these particulars.